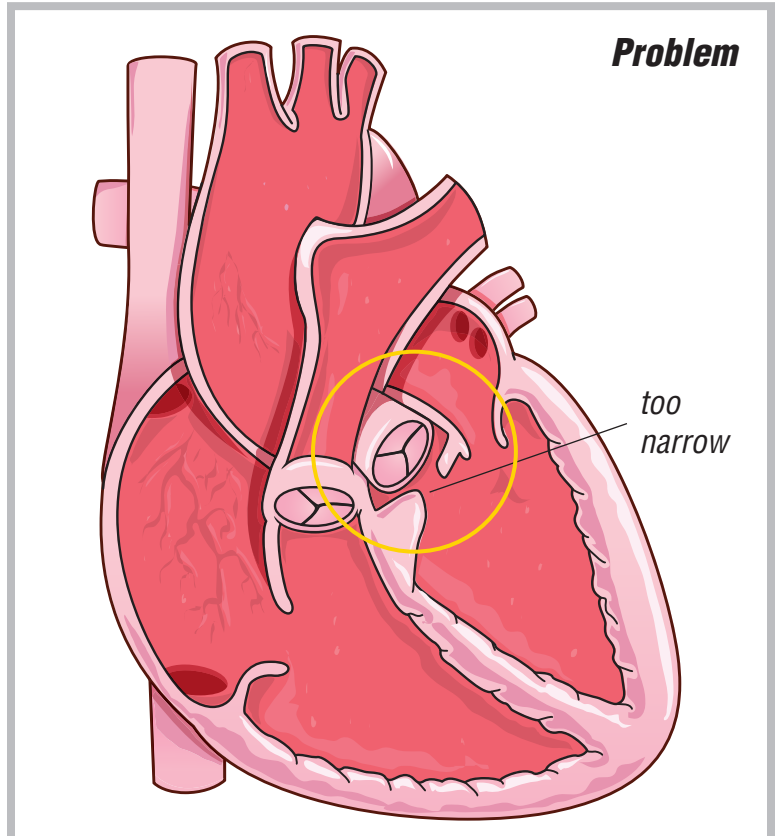


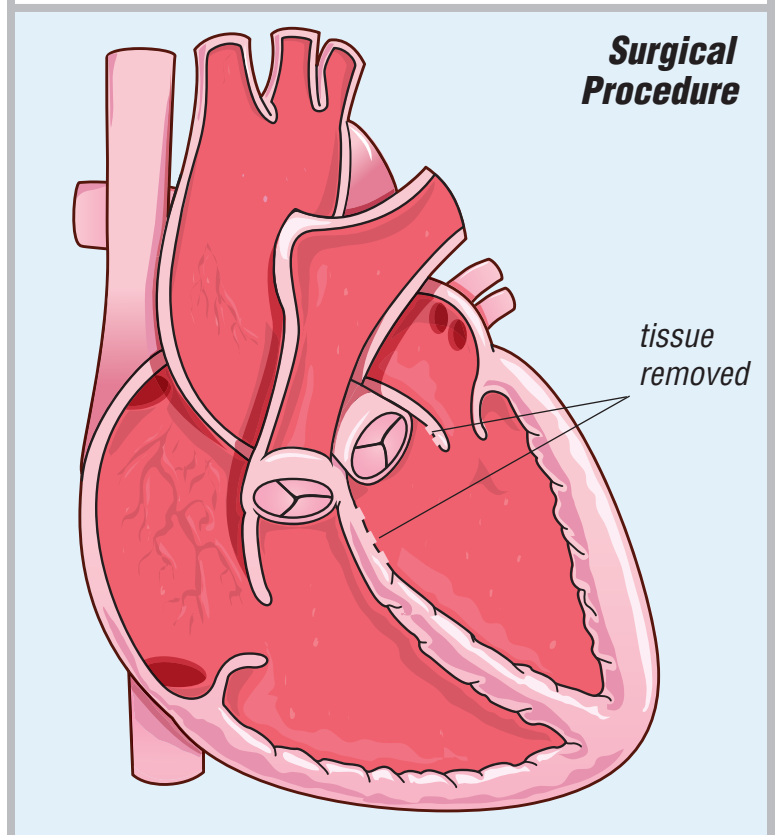
# Aortic Stenosis (AS)

## Subaortic Membrane

A narrowing occurs between the bottom left heart chamber and the main artery to the body (aorta). The narrowing is just under the aortic valve (subaortic membrane). The narrowing causes a reduced amount of blood carrying oxygen to the body. It also makes the bottom left heart chamber overwork pushing against the narrowing.



Subaortic membrane is caused by a growth of tissue under the aortic valve. Surgery is done to remove the tissue (membrane) so the valve will continue to function.



The operation to repair aortic stenosis is done with a median sternotomy (chest) incision.