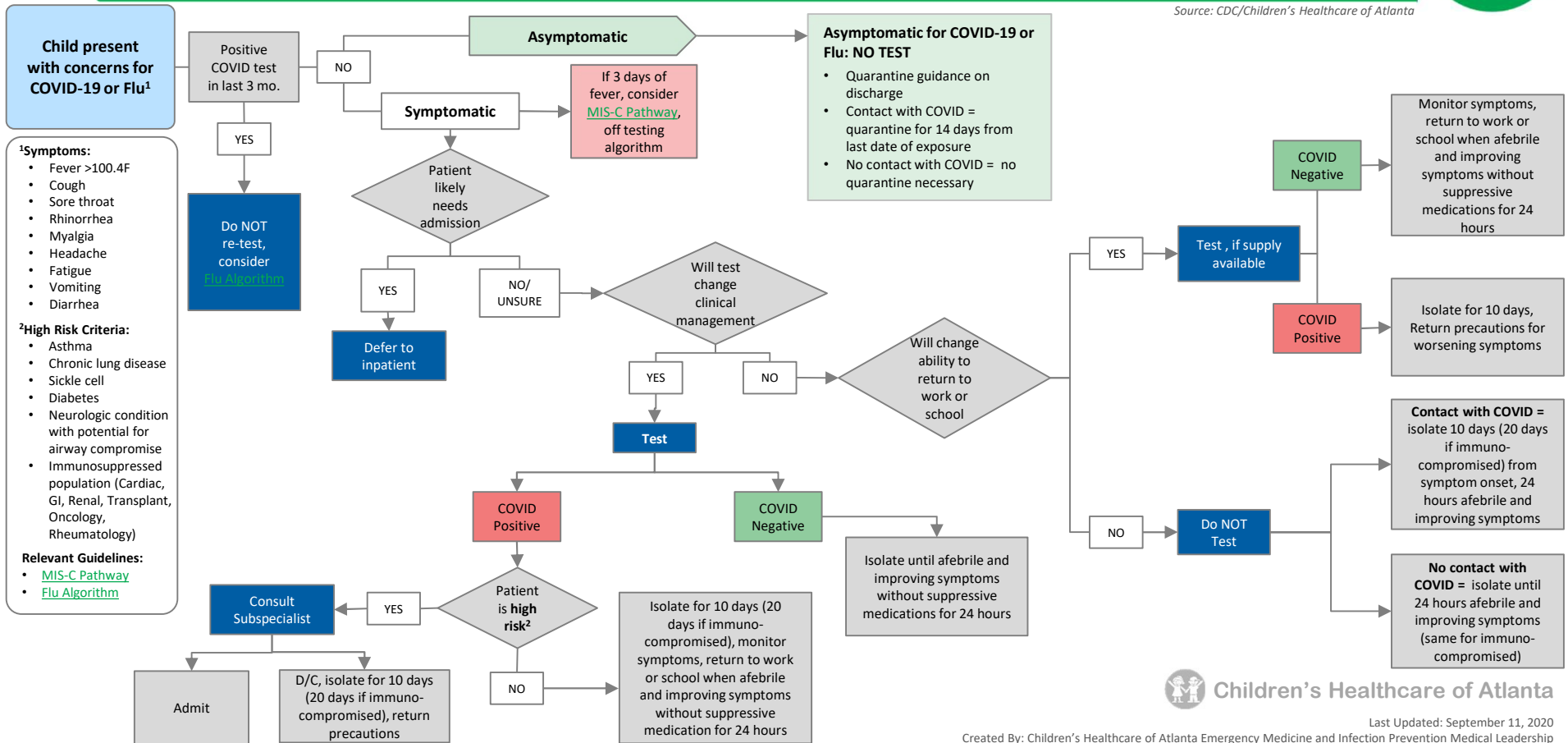


2020-2021 COVID-19/Flu Testing Algorithm



Disclaimer: This algorithm serves as a general framework to approach COVID-19 and Flu Testing, clinical judgement takes precedence

Source: CDC/Children's Healthcare of Atlanta



- ¹Symptoms:**
- Fever >100.4F
 - Cough
 - Sore throat
 - Rhinorrhoea
 - Myalgia
 - Headache
 - Fatigue
 - Vomiting
 - Diarrhea

- ²High Risk Criteria:**
- Asthma
 - Chronic lung disease
 - Sickle cell
 - Diabetes
 - Neurologic condition with potential for airway compromise
 - Immunosuppressed population (Cardiac, GI, Renal, Transplant, Oncology, Rheumatology)

- Relevant Guidelines:**
- MIS-C Pathway
 - Flu Algorithm