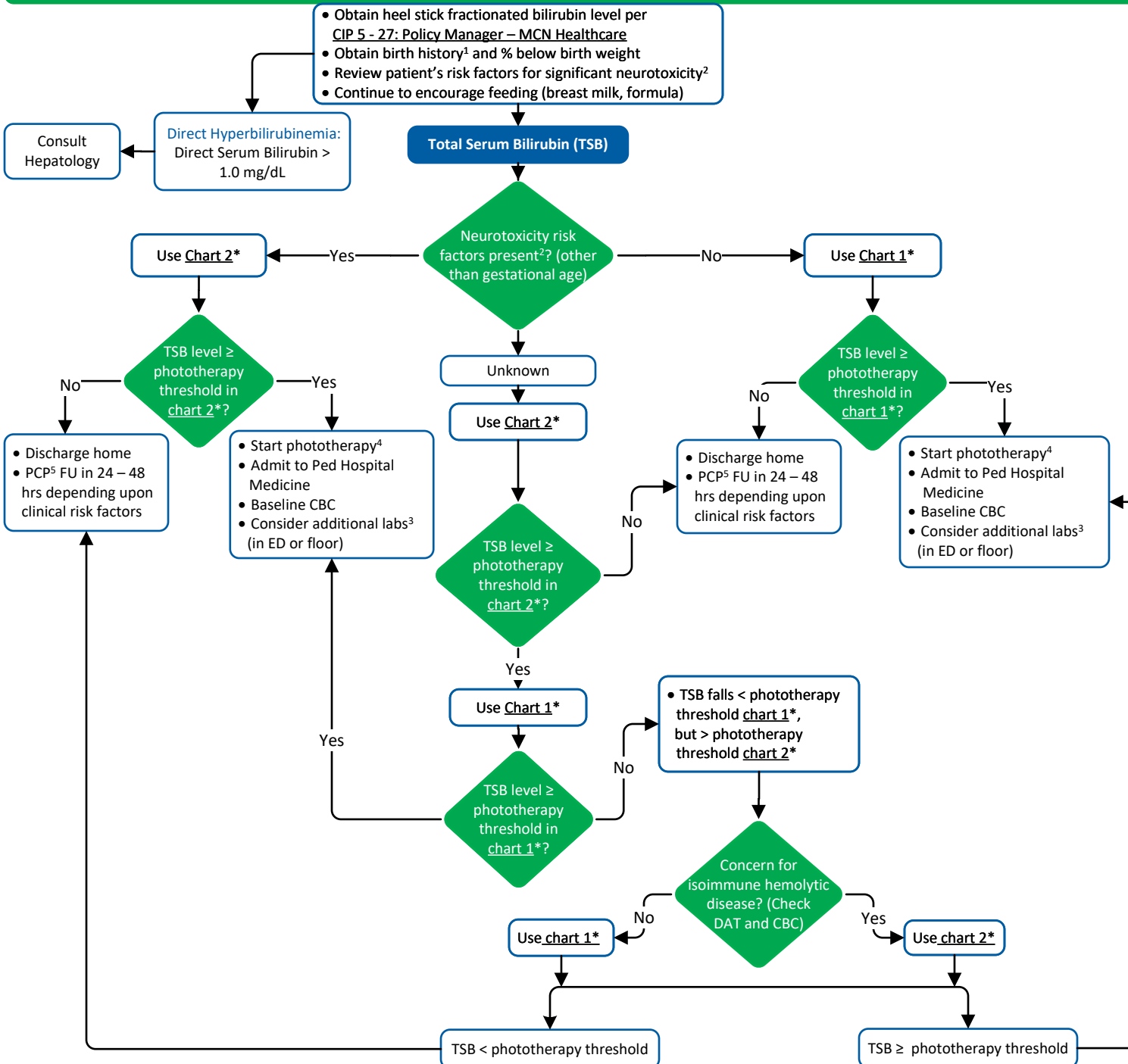


# Hyperbilirubinemia Pathway: ED Management

For use in patients  $\leq 14$  days old, gestational age  $\geq 35$  weeks, and concern for jaundice or elevated bilirubin

February 2025



## EXCLUSION CRITERIA

- Concern for other associated illnesses: infection/sepsis, cardiac disease, metabolic disease

## BIRTH HISTORY<sup>1</sup>

- Maternal and infant blood type, RhD, DAT
- Gestational age
- Birth date and time
- Birth weight
- Delivery complications
- History of phototherapy during birth hospitalization
- Feeding history

## SIGNIFICANT NEUROTOXICITY RISK FACTORS<sup>2</sup> (Other than gestational age)

- Isoimmune hemolytic disease
  - Check Care Everywhere for maternal antibodies/baby's DAT at birth
- Other hemolytic disease (e.g. G6PD deficiency)
- Albumin < 3.0 g/dL (if known)
- Significant clinical instability in the previous 24 hours, sepsis

## ADDITIONAL LABS<sup>3</sup>

- Obtain DAT if maternal blood type is unknown/O/Rh negative, or antibody screen at delivery was positive
- CMP if ill-appearing/dehydrated
- Reticulocyte count and type and screen if hemolysis

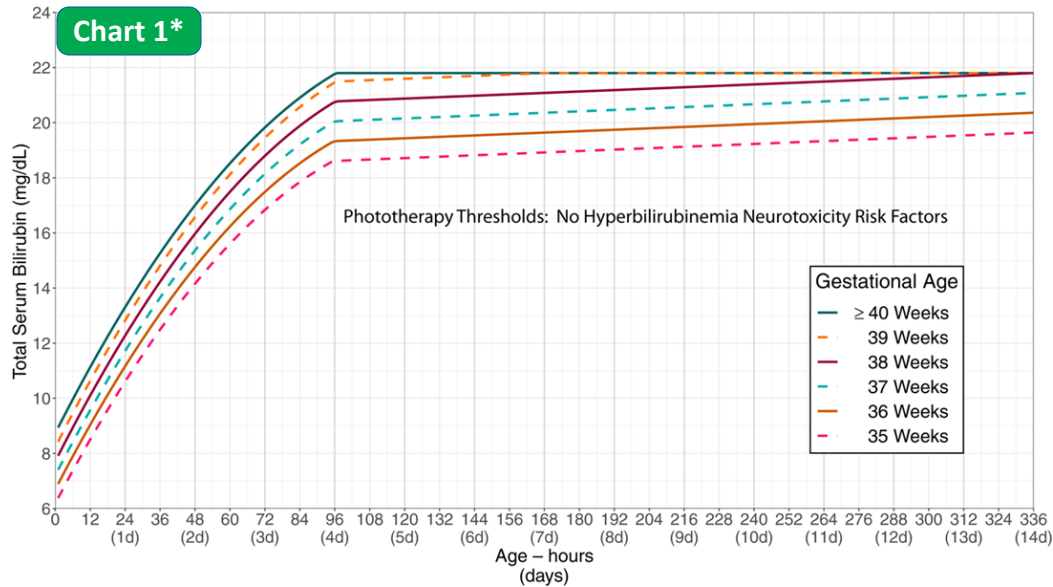
## PHOTOTHERAPY<sup>4</sup>

- When phototherapy is indicated, assess need for escalation of care if TSB is within 2 mg/dL of exchange transfusion threshold based on chart 3\* (no neurotoxicity risk factors) or chart 4\* (neurotoxicity risk factors present).
- If escalation of care is indicated:
  - Phototherapy STAT
  - Consult NICU
  - CBC, CMP, DAT, type and crossmatch
  - IVF hydration

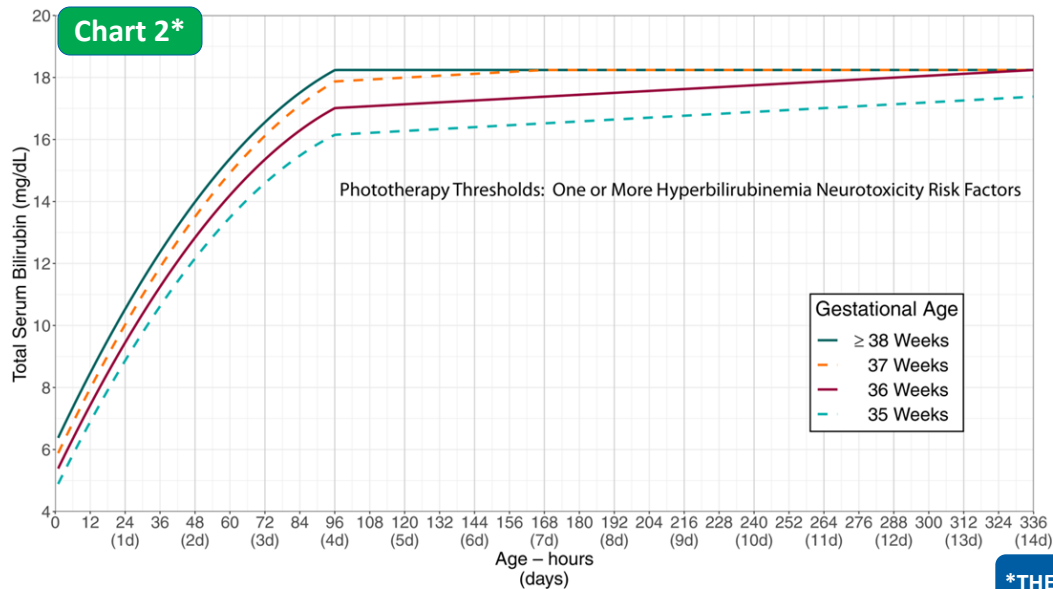
## RETURN TO ED IF PCP NOT AVAILABLE<sup>5</sup>

\*THESE VALUES MAY BE PLOTTED ON [BILITOOL.ORG](http://BILITOOL.ORG)

Phototherapy Thresholds: No Hyperbilirubinemia Neurotoxicity Risk Factors  
(other than gestational age)



Phototherapy Thresholds: One or More Hyperbilirubinemia Neurotoxicity Risk Factors  
(other than gestational age)



\*THESE VALUES MAY BE PLOTTED ON [BILITOOL.ORG](https://www.bilitool.org)

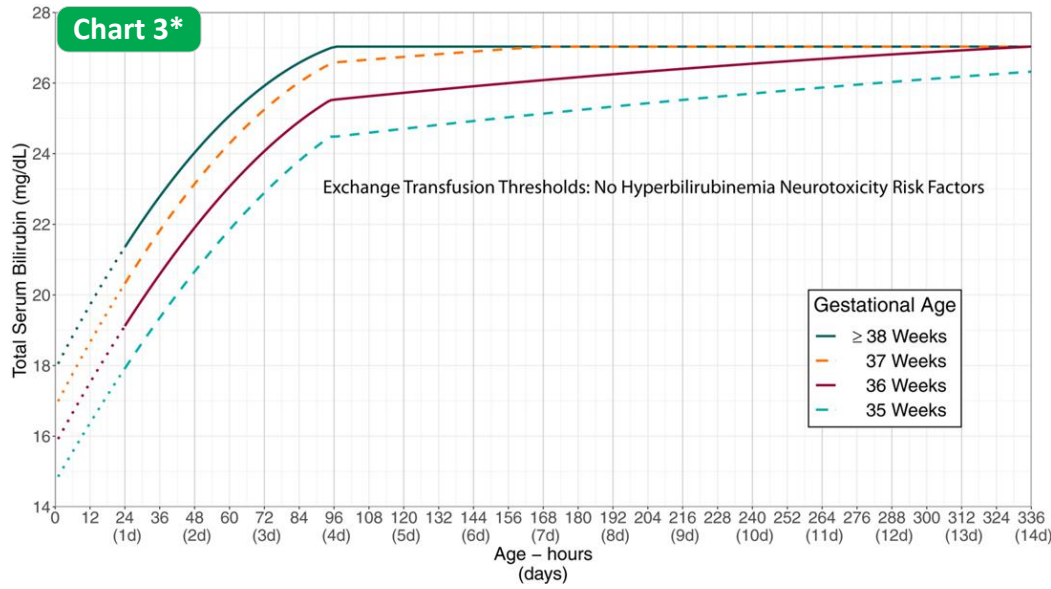
# Hyperbilirubinemia Pathway: ED Management

For use in patients  $\leq 14$  days old, gestational age  $\geq 35$  weeks, and concern for jaundice or elevated bilirubin

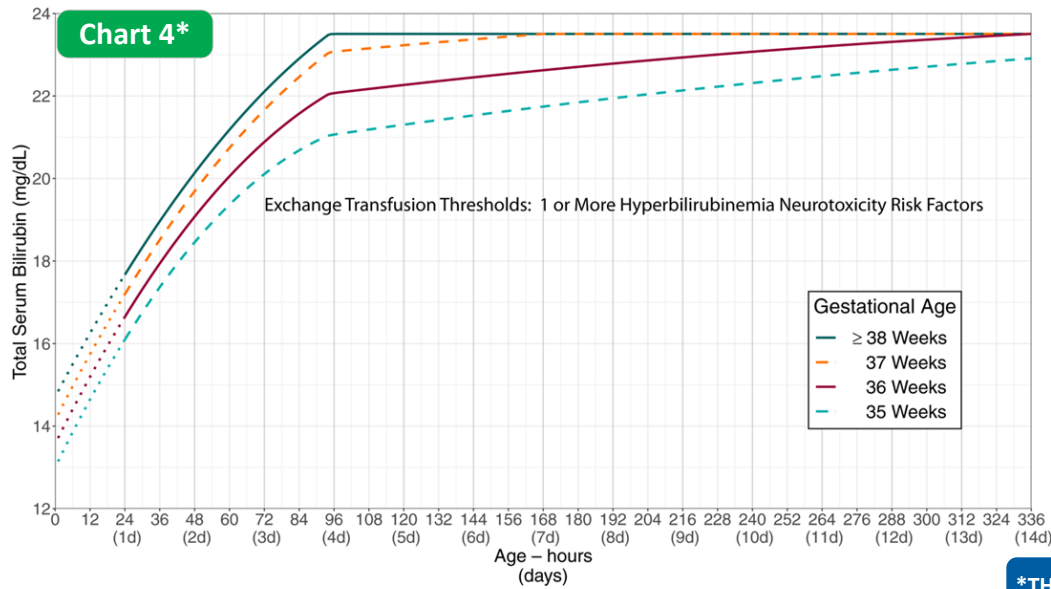
February 2025



## Exchange Transfusion Thresholds: No Hyperbilirubinemia Neurotoxicity Risk Factors (other than gestational age)



## Exchange Transfusion Thresholds: One or More Hyperbilirubinemia Neurotoxicity Risk Factors (other than gestational age)



\*THESE VALUES MAY BE PLOTTED ON [BILTOOL.ORG](https://www.biltool.org)